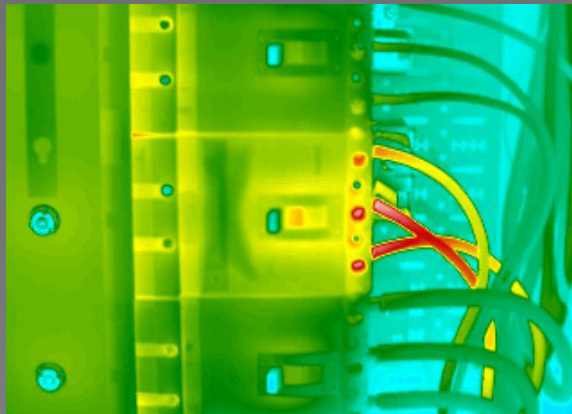




Thermal Imaging

See beyond what your eye can see.

Powered by:



3 Phase breaker



3 Phase fused disconnect

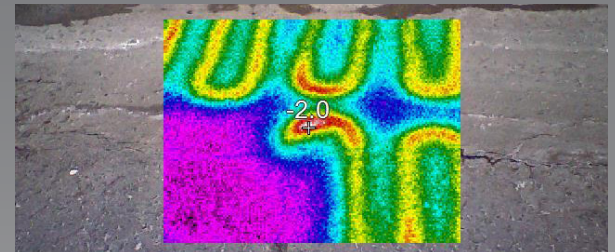


3 Phase contactor

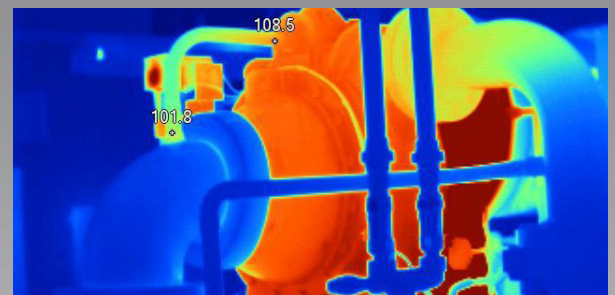
Most electrical failures can be detected before they occur. Heat is generated when electrical connections begin to loosen. With our thermal imaging equipment we can find potential problems before they happen.

This saves money, by finding small problems before they are big ones. This allows you to schedule down time based on your timeline, not by surprise. Each scan or thermal image will be followed up by a full report, showing a possible cause and a suggested repair list.

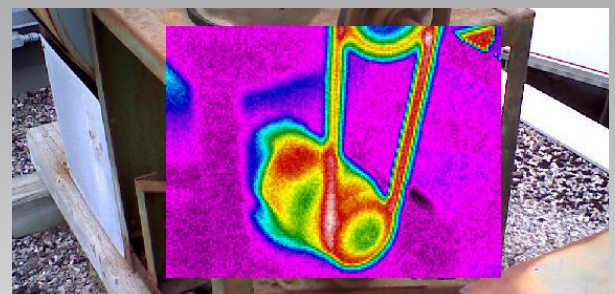
Thermal imaging also works on other applications such as: Mechanical, building, commercial, HVAC.



Ramp heating for underground parking garage



Chiller unit



Roof top exhaust fan



ECRA/ESA#7007507

The Electrical Department Company

web: theelectricaldepartment.com email: service@theelectricaldepartment.com

east: 905.920.2016 west: 519.731.0311





Thermal Imaging

Real pictures from hot spots, not detected or not repaired.

Powered by:



600 volt splitter, causes downtime for general power

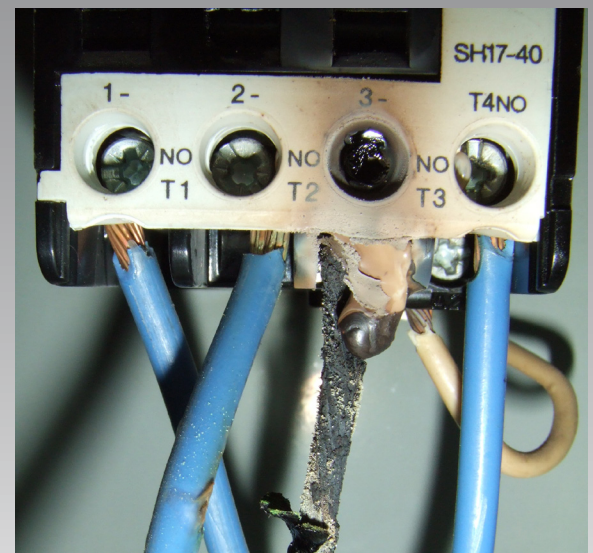


Motor contactor, causes downtime for a production line.

120 volt contactor, connected to heating elements. Caused downtime to the equipment.



120/208 volt 3 phase panel. Cause not known, however history of hot spots. Causes downtime for general power.



ECRA/ESA#7007507

The Electrical Department Company

web: theelectricaldepartment.com email: service@theelectricaldepartment.com

east: 905.920.2016 west: 519.731.0311

